



Laboratory Incubators

*Designed and manufactured in Australia by
Thermoline*

ABN: 80 000 859 129

Head Office: 10-12 Ross Place
Wetherill Park NSW 2164 Australia

Phone: +61 2 9604 3911

Email: hello@thermoline.com.au

Web: www.thermoline.com.au

Proudly Family-Owned and Operated

Today, we remain a proud second-generation family business



A family
owned
Australian
business



Laboratory Incubators

Designed and Manufactured by **Thermoline**

The Thermoline Benchtop Incubator range is designed and manufactured to provide safe and precise temperature conditions for your research and samples stored inside. With a digital microprocessor controller and a temperature range from ambient +5°C to +60°C, our benchtop incubator is the economical choice for all non-critical samples requiring incubation.

- **Models available:**

Thermoline has eight laboratory incubators available, all designed and manufactured in Australia. This is the benchtop range and is made to meet your clinical environment's high standards; our benchtop incubators are innovative, easy to use and deliver consistent performance. Thanks to the simple switch on the rear of the incubator, you can change between fan-forced and natural convection whenever you need. The 20L to 120L models all feature an option (standard on TI-280F) for an internal clear polycarbonate door allowing the operator to open the outer door and view their samples inside without interrupting the temperature conditions.

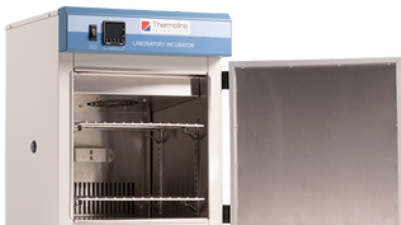


- **Digital Controller:**

The Omron E5CC uses an automated microprocessor to control the temperature within $\pm 0.1^{\circ}\text{C}$. The bright LED display has a range of functions including high alarm and calibration feature.

- **Thermo-Wall Heating:**

Our unique Thermo-Wall heating consists of heating pads fixed to the exterior of the liner that are controlled by the cabinet's Omron PID controller. This creates an environment where heat is uniformly distributed from all sides and through the floor.



- **Stainless Steel Interior:**

Stainless steel is durable, easy to clean and corrosion-resistant, making it the perfect choice for high heat tasks. 304-grade stainless steel is used here to ensure the most corrosive-resistant liner possible.

- **Fan Forced or Natural:**

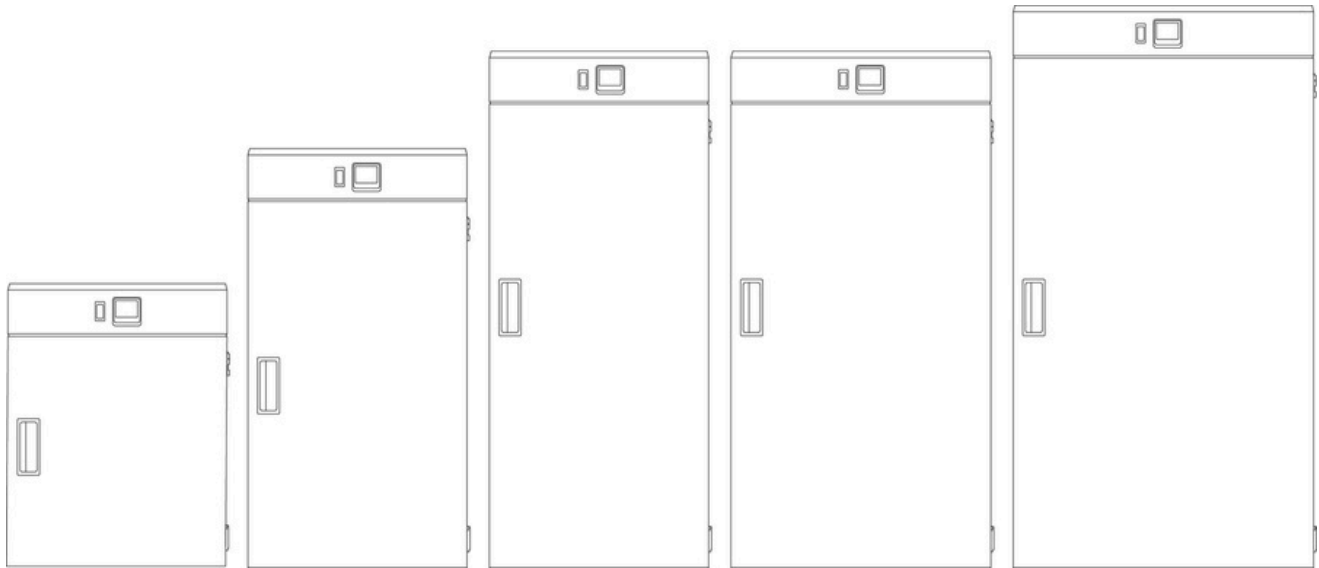
Fan-forced systems use a fan to circulate warm air, while natural convection systems rely on the gentle upward movement of warm air to circulate heat. These incubators allow you the choice of either method via a switch on the rear of the incubator.





Laboratory Incubators

Designed and Manufactured by **Thermoline**



Dimensions

External

WxDxH (mm)

TI-20F	TI-50F	TI-80F	TI-120F	TI-280F
370x380x470	370x380x720	370x380x910	465x485x985	570x595x1235

Internal

WxDxH (mm)

300x300x235	300x300x485	300x300x675	395x405x735	500x505x985
-------------	-------------	-------------	-------------	-------------

Clearance

Front (mm)

370	465	570
-----	-----	-----

Back (mm)

100

Sides (mm)

100



See our premium upright range!
360L, 520L and 1100L

Laboratory Incubators

Designed and Manufactured by **Thermoline**

**Technical
Specification**

	TI-20F	TI-50F	TI-80F	TI-120F	TI-280F
Temperature Range	Ambient +5°C to +60°C				
Temperature Control Stability	+/- 0.1°C				
Temperature Uniformity	With Fan +/- 1.0°C Without Fan +/- 2.0°C at 40°C				
Nominal Capacity	20L	50L	80L	120L	280L
Porthole Diameter	13mm				
Weight	15kg	18kg	30kg	50kg	80kg
Electrical	100W/230V	130W/230V	175W/230V	310W/230V	515W/230V



Laboratory Incubators

Designed and Manufactured by **Thermoline**

Features

Shelves (max @100mm spacing)

TI-20F

TI-50F

TI-80F

TI-120F

TI-280F

2 (max 2)

3 (max 4)

4 (max 6)

4 (max 6)

5 (max 7)

Adjustable Feet

X

X

X

X

✓

Internal Fan

✓

✓

✓

✓

✓

Fibreglass Insulation

✓

✓

✓

✓

✓

Omron E5CC Controller

✓

✓

✓

✓

✓

Solid Door

✓

✓

✓

✓

✓

Inner Polycarbonate Door

Optional

✓

Safety

Over Current Protection

✓

✓

✓

✓

✓

Over Temperature Safety

✓

✓

✓

✓

✓

Options

BMS Alarm Output

No volt contact closure plug and socket connection to a Building Management System

Additional Shelves

Additional Stainless Steel shelves to suit

Door Locks & Ports

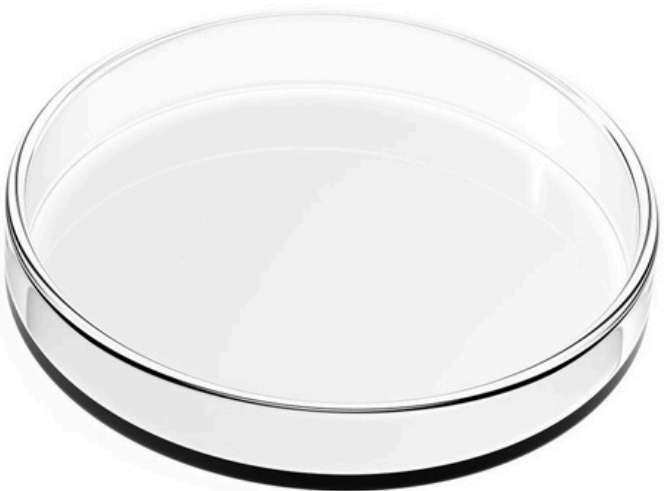
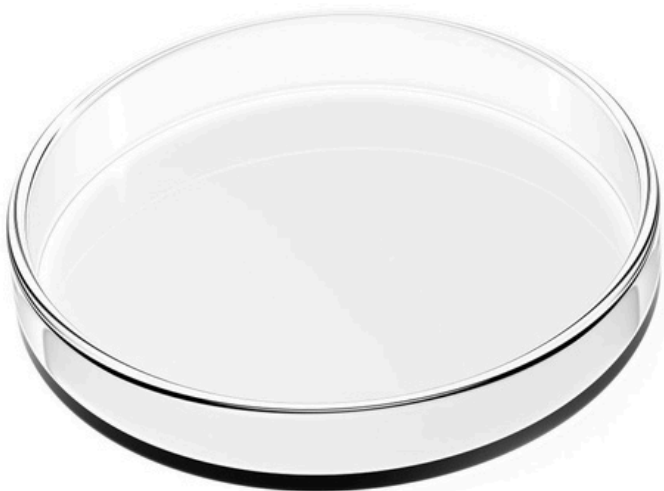
Key lockable door locks, Add additional 13mm port holes or choose 50mm port holes

Programmable Controller

256 Segment Multi-Setpoint Controller with Ramp and Dwell Feature

Castors

Castors can be fitted to allow for easy moving of the cabinet.
Not recommended for cabinets mounted on a bench.





**We are proudly
Australian owned**

We will continue to invest in Australian
manufacturing.

