

SPARK PROOF REFRIGERATORS

(+3°C TO +10°C)

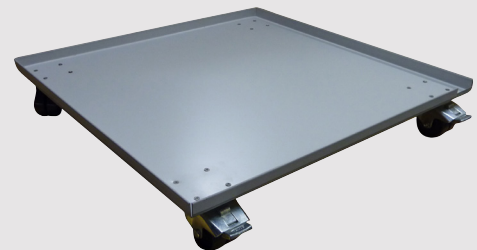
Image: TR-270-SP shown with optional stand to raise freezer cabinets to a minimum of 300mm above the floor.

Note: Only the interior is spark proof.



Spark Proof Laboratory Refrigerators

- All electrical parts and controls are outside working space
- Natural gravity convection air movement
- Manual defrost
- Solid state electronic display
- Plastic inbuilt moulded liner
- Powdercoated shelves and transparent storage drawers
- Solid access door with magnetic gasket
- Microprocessor controller with built in error codes
- Optional alarm contacts available



A specially designed mobile tray which fits under the freezer to allow the unit to be moved easily from one place to another.

Head Office Phone (02) 9604 3911
Head Office Fax (02) 9725 1706

Email info@thermoline.com.au
Web www.thermoline.com.au

 **Thermoline**
S C I E N T I F I C
H I G H E R S T A N D A R D S I N S C I E N C E

PRODUCT DETAILS

These refrigerator models are completely spark free on the inside (all internal electrical components have been removed) and have been specifically designed to allow for the safe storage of volatile samples. Volatile samples are considered unsafe for storage in standard refrigerators as any spark formed by components within the freezer can ignite fumes or the sample itself. Refrigeration compressors both 130 and 240 litre models are fitted with a unique 'spark proof start mechanism' should any flammable vapours be present outside the refrigerator at floor level.

In reference to AS/NZS60079.10:2004 for zoning of hazardous areas:

For zone 2 classification it is recommended that a refrigerator or freezer be located 300mm above floor level. The model TRF-SP stand suits all spark proof refrigerator and freezer models offered to raise them to a minimum of 300mm above the floor as required.

Optional Accessories
External connection for BMS (in-house building management system)
Specially designed mobile tray for easy moving of cabinets
Stand to raise the cabinet 300mm above the floor

SPECIFICATIONS

Model	TR-130-SP	TR-240-SP	TR-270-SP
Capacity (litres)	130	240	270
Temperature Range	+3°C to +10°C		
Shelves	3	5	5 with 1 drawer
Internal Dimensions (HxWxD mm)	700x460x430	1270x450x430	1460x460x430
External Dimensions (HxWxD mm)	840x540x530	1510x550x560	1650x530x570
Defrost Method	Cyclic		
Electrical	1A		
Weight (kg)	50	66	90

Thermoline Scientific have been manufacturing and distributing high quality laboratory and scientific testing equipment since 1970. Over this time, Thermoline has grown to be a leading brand in the science industry, with our equipment being used in small and large Hospitals, Universities and Research Laboratories across Australia and the Asia Pacific region.

We're proud to say that we are 100% Australian owned and operated.

Head Office Phone (02) 9604 3911

Head Office Fax (02) 9725 1706

Email info@thermoline.com.au

Web www.thermoline.com.au