

# ECONOMY FREEZERS

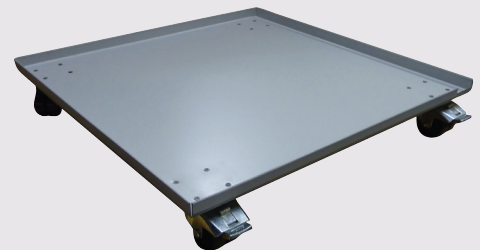
(-15°C TO -20°C)

Image: TEUF-90 and TEUF-181



## Economy Laboratory Freezers

- Two economy style upright freezers available
- Fitted with digital LAE controllers
- High and low alarms standard
- Manual defrost (no defrost cycle)
- Key lockable doors standard
- Fixed position shelves with clear plastic storage containers
- Easy installation - plug in and set temperature
- Spark proof models available



A specially designed mobile tray which fits under the freezer to allow the unit to be moved easily from one place to another.

**Head Office Phone** (02) 9604 3911  
**Head Office Fax** (02) 9725 1706

**Email** [info@thermoline.com.au](mailto:info@thermoline.com.au)  
**Web** [www.thermoline.com.au](http://www.thermoline.com.au)



**Thermoline**  
S C I E N T I F I C

HIGHER STANDARDS IN SCIENCE

# PRODUCT DETAILS

These two economy style upright freezers are ideal for samples requiring storage at -20°C. Both models are fitted with a digital LAE controller, which has high and low alarms, and are both supplied standard with manual defrost (manual defrost ensures the temperature remains stable during operation). Shelves are in a fixed position and clear plastic storage containers are supplied.

The 90 and 181 litre freezers are also available with a spark proof design. The spark proof design ensures volatile materials can be safely stored inside the freezer. Refer to spark proof freezer page for further details.

## Optional Accessories

POWER GUARD - Offers protection against low voltage, high voltage spikes and limited lightning.

External connection for BMS (in-house building management system)

# SPECIFICATIONS

Model	TEUF-90	TEUF-181
Capacity (litres)	90	181
Temperature Range	-15 °C to -20 °C	
Temperature Control	±0.2 °C	
Storage Containers	4 clear plastic	6 clear plastic
External Dimensions (HxWxD mm)	870x540x600	1440x545x570
Internal Dimensions (HxWxD mm)	650 / 430x400x400	1240x405x380
External Material	White enamel	
Internal Material	White PS	
Electrical	240V 50Hz, 4A	
Weight (kg)	40	60

Thermoline Scientific have been manufacturing and distributing high quality laboratory and scientific testing equipment since 1970. Over this time, Thermoline has grown to be a leading brand in the science industry, with our equipment being used in small and large Hospitals, Universities and Research Laboratories across Australia and the Asia Pacific region.

We're proud to say that we are 100% Australian owned and operated.

**Head Office Phone** (02) 9604 3911

**Head Office Fax** (02) 9725 1706

**Email** [info@thermoline.com.au](mailto:info@thermoline.com.au)

**Web** [www.thermoline.com.au](http://www.thermoline.com.au)

# ECONOMY FREEZER

(-18°C TO -22°C)

Image: ALUF-370



## **Economy Laboratory Freezer**

- One economy style upright freezer
- Fitted with digital LAE controller
- High and low alarms standard
- Manual defrost (no defrost cycle)
- Key lockable doors standard
- Fixed position shelves
- Easy installation - plug in and set temperature
- Spark proof model available

**Head Office Phone** (02) 9604 3911  
**Head Office Fax** (02) 9725 1706

**Email** [info@thermoline.com.au](mailto:info@thermoline.com.au)  
**Web** [www.thermoline.com.au](http://www.thermoline.com.au)

 **Thermoline**  
S C I E N T I F I C  
H I G H E R   S T A N D A R D S   I N   S C I E N C E

# PRODUCT DETAILS

Thermoline have a 370 litre manual defrost upright freezer which is ideal for use in laboratories where keeping samples at a constant temperature down to -22 degrees is required. This particular model has six refrigerated fixed shelves, each approximately 200mm apart. These refrigerated shelves help keep the temperature variation minimal from top to bottom even when fully loaded.

The temperature is displayed and controlled by a digital controller located on the front of the cabinet. This controller has audible and visual 'high' and 'low' alarms plus allows for the option of a BMS (building management system) connection to be added if required by the user.

The interior of this freezer is also classified as 'spark free' as it does not have any wiring (such as a thermostat or light) which could ignite any vapours from hazardous materials which may be stored inside.

Castors are provided on the unit to ensure easy moving and front lock down feet help keep the cabinet stable when opening and closing the front door. A 12mm side port hole is provided should sensors be used to monitor the inside conditions.

The front door is lockable to keep any samples safe should the freezer be left unattended. This freezer is well designed, reliable and economical making it one of our most popular models yet.

## Optional Accessories

POWER GUARD - Offers protection against low voltage, high voltage spikes and limited lightning.

External connection for BMS (in-house building management system)

# SPECIFICATIONS

Model	ALUF-370
Capacity (litres)	370
Temperature Range	-18 °C to -22 °C
Temperature Control	±0.2 °C
Storage Containers	none
External Dimensions (HxWxD mm)	1940x475x640
Internal Dimensions (HxWxD mm)	1530x475x440
External Material	White enamel
Internal Material	White plastic
Electrical	240V 50Hz, 4A
Weight (kg)	65

Thermoline Scientific have been manufacturing and distributing high quality laboratory and scientific testing equipment since 1970. Over this time, Thermoline has grown to be a leading brand in the science industry, with our equipment being used in small and large Hospitals, Universities and Research Laboratories across Australia and the Asia Pacific region.

We're proud to say that we are 100% Australian owned and operated.

**Head Office Phone** (02) 9604 3911

**Head Office Fax** (02) 9725 1706

**Email** [info@thermoline.com.au](mailto:info@thermoline.com.au)

**Web** [www.thermoline.com.au](http://www.thermoline.com.au)

# ECONOMY FREEZER

(-18°C TO -22°C)

Image: TLUF-520-2D shown with optional chart recorder



## **Economy Laboratory Freezer**

- One large economy style upright freezer with dual front opening doors
- Stainless steel external and internal
- Fitted with digital LAE controller
- High and low alarms standard
- Manual defrost (no defrost cycle)
- Five adjustable shelves supplied standard
- Easy installation - plug in and set temperature
- Spark proof model available

**Head Office Phone** (02) 9604 3911  
**Head Office Fax** (02) 9725 1706

**Email** [info@thermoline.com.au](mailto:info@thermoline.com.au)  
**Web** [www.thermoline.com.au](http://www.thermoline.com.au)

 **Thermoline**  
S C I E N T I F I C  
H I G H E R S T A N D A R D S I N S C I E N C E

# PRODUCT DETAILS

This double door freezer can operate down to -22°C with manual defrost eliminating fluctuating temperature. Ideal for laboratory applications where a constant temperature is essential. The two door design ensures that the low temperatures are contained while retrieving items from either the top of bottom of the freezer.

Standard model has digital temperature control and audible high/low temperature alarms. The interior of this freezer is also classified as 'spark free' as it does not have any wiring (such as a thermostat or light) which could ignite any vapours from hazardous materials which may be stored inside.

External and internal finish is in stainless steel. Door lock can be fitted to the top door allowing for the safe storage of valuable items. Additional shelving also available.

## Optional Accessories

Additional shelves

POWER GUARD - Offers protection against low voltage, high voltage spikes and limited lightning.

External connection for BMS (in-house building management system)

# SPECIFICATIONS

Model	TLUF-520-2D
Capacity (litres)	520
Temperature Range	-18 °C to -22 °C
Temperature Control	±0.2 °C
Shelves	5 adjustable shelves
External Dimensions (HxWxD mm)	1830x640x800
Internal Dimensions (HxWxD mm)	690x540x700 x 2 sections
External Material	Stainless steel
Internal Material	Stainless steel
Electrical	240V 50Hz, 4A
Weight (kg)	120

Thermoline Scientific have been manufacturing and distributing high quality laboratory and scientific testing equipment since 1970. Over this time, Thermoline has grown to be a leading brand in the science industry, with our equipment being used in small and large Hospitals, Universities and Research Laboratories across Australia and the Asia Pacific region.

We're proud to say that we are 100% Australian owned and operated.

**Head Office Phone** (02) 9604 3911

**Head Office Fax** (02) 9725 1706

**Email** [info@thermoline.com.au](mailto:info@thermoline.com.au)

**Web** [www.thermoline.com.au](http://www.thermoline.com.au)