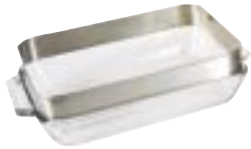


Floatation Bath (Ambient +5°C to +65°C)

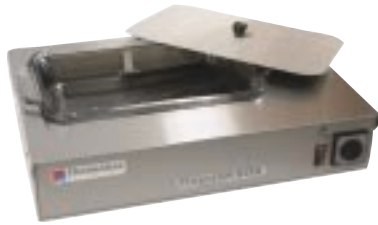
AUSTRALIAN MADE

FEATURES

New style Floatation Bath for tissue work featuring illuminated lift out borosilicate glass insert. Dimensions of the insert are 28x20x5cm deep, with a lid to cover the bath when not in use. Samples are illuminated from below the water surface by a built in 9W high efficiency lamp. The lamp is easily changed if necessary by removing the stainless steel work top. The unit is finished in PVC coated steel with a stainless steel work top area.



OPTIONAL FD-85
EXTENDED DISH



TFB WITH STANDARD
FD-50 DISH

TEMPERATURE
RANGE: Ambient +5°C to +65°C

ORDER CODE	INSERT DIM. LxWxD cm	DIM. EXT LxWxD cm	ELECT. 240V 50Hz	APPROX WEIGHT Kg.	OPTIONAL EXTENDED 8.5cm INSERT
TFB	28x20x5	43x35x10	1000W	10	FD-85

High Temperature Bath (Ambient +5°C to +250°C)

AUSTRALIAN MADE



THTB-10

FEATURES

The Thermoline High Temp Bath is a circulated unit capable of much higher temperatures than the standard water baths. Depending upon the heating medium, the bath can operate Amb. +5 to +250°C. The interior of the bath is constructed of a seamless stainless steel tank with a flat lid. The useable area of the bath is 23cmLx23cmW and is 17cmD. The exterior is constructed of both stainless steel and PVC coated steel. Other features include: A heater/circulator, fan cooled motor, safety thermostat, 1500W low watts density heating element for use with oils and a digital solid state temperature controller and auto over temperature safety (Failsafe) system.

ORDER CODE	DIM. INT USEABLE LxWxD (cm)	DIM. EXT LxWxD (cm)	ELECT. 240V 50Hz	APPROX WEIGHT KG
THTB-10	23x23x17	47x34x40	1540W	15